

# ENUM Client Installation Guide

Japan Registry Services Co., Ltd.

Title: ENUM Client

Version: 1.\*

Purpose: Operation of ENUM is checked visually and an understanding of a protocol is deepened.

Outline:

1. It asks an ENUM DNS server and the NAPTR record by service which can be used, and the Order value is acquired.
2. Perfect substitution according to a regular expression on the occasion of acquisition of URI
3. The list of services is sorted and displayed by Preference.
4. Service is chosen and application is started.
5. The fall back vision check at the time of connection failure

Environment of operation:

Microsoft Winsows XP Prefessional Version 2002 Service Pack2

Microsoft FlexGrid Control(MSFlexGrid.Ocx Ver 6.0.84.18)

Copyright (C) 2005 Japan Registry Services Co., Ltd. All Rights Reserved.

- 1) The following five files are stored in the enum\_client folder.

enum\_client.msi

InstMsiA.Exe

InstMsiW.Exe

Setup.Exe

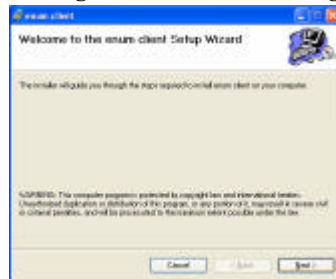
Setup.Ini

- 2) Setup.Exe in an enum\_client folder is performed.

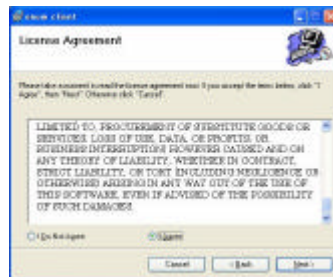
Note:

If ENUM Clinet or ENUM SDK is already installed, please uninstall them first and then reinstall.

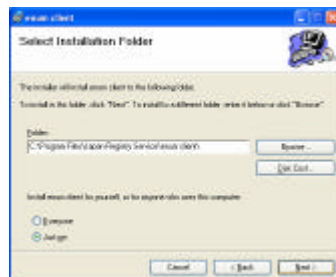
- 3) Click a "Next" button according to an installation guidance screen.



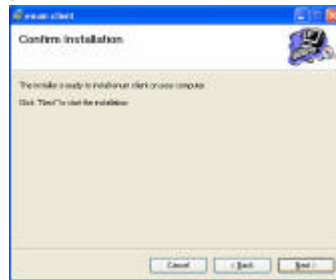
- 4) Click a "Next" button according to License Agreement guidance screen.



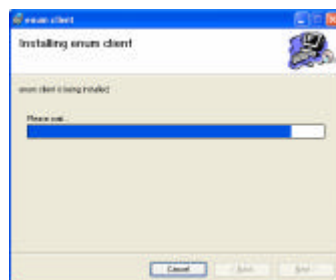
- 5) Choose an installation folder according to an installation guidance screen, and click a "Next" button.



6) When installation is ready, click "next" button according to the guidance screen.

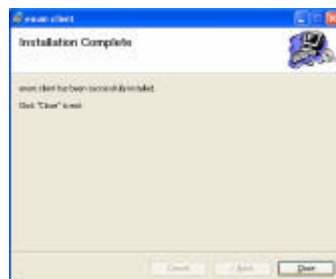


7) Following dialog box is displayed during installation.



8) Following dialog box is displayed when installation is finished.

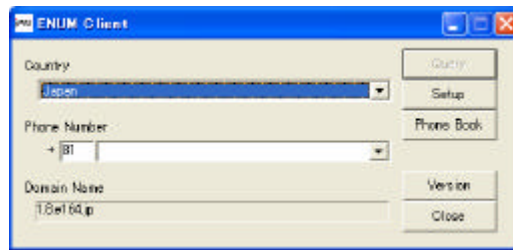
Click "Close" button according to the guidance screen.



9) A success of installation adds the following icons to a desktop.



10) executed by double click of the the following icons to a desktop.



All of installation procedure is done.